

The VICAR OF DIBLEY

Hilarity Theatre Group 'Vicar of Dibley' - Character List



Geraldine

Geraldine Granger is the heart and soul of 'The Vicar of Dibley.' As the vivacious and unconventional vicar of a small conservative village, she brings a unique blend of warmth, wit, and wisdom to her role. Geraldine is characterised by her infectious humour, compassionate nature, and a slightly irreverent approach to her duties. Auditioning for Geraldine requires an ability to portray a character who is both deeply caring and unapologetically herself, balancing humour with sincerity and strength with vulnerability. The role demands a dynamic range, capable of delivering quick-witted comedy as well as heartfelt, poignant moments. Geraldine is a trailblazer, challenging societal norms with her very presence, and she navigates the quirks of village life with both grace and a touch of mischief. Actresses auditioning for this role should be prepared to embody Geraldine's larger-than-life personality, her deep empathy for others, and her ability to light up the screen with her charisma and charm.



Alice

Alice Tinker, portrayed as the endearingly naïve and somewhat scatterbrained verger of Dibley, is a character who combines innocence with comic timing. Auditioning for Alice requires an actress capable of portraying a sense of wide-eyed wonder and genuine sincerity, often delivering lines with an oblivious yet charming lack of self-awareness. Alice's character is known for her literal interpretations, offbeat logic, and a heart of gold, making her both lovable and humorous. The role demands a delicate balance of comedic innocence and a subtle depth, as Alice often provides moments of unexpected insight amidst her apparent simplicity. Actresses auditioning for this role should be prepared to embrace Alice's quirky nature, her childlike view of the world, and her ability to bring a light-hearted, joyful presence to every scene.





Hugo

Hugo Horton is depicted as the gentle, somewhat shy, and often bumbling son of the domineering council chairman. In auditioning for Hugo, an actor must capture his unassuming and mild-mannered nature, often contrasting with the more forceful personalities in Dibley. Hugo is known for his kindness and an almost childlike innocence, coupled with a deep desire to please others, especially his father. The role requires a delicate portrayal of naivety and loyalty, often leading to humorous situations due to his lack of worldly wisdom. Despite his simplicity, Hugo possesses a heartwarming earnestness and a quiet strength that becomes apparent in key moments. Actors auditioning for Hugo should be prepared to convey a sense of innocence and genuineness, bringing to life his endearing qualities and his occasional moments of unexpected courage and insight. The portrayal of Hugo demands a subtle touch, blending comedic naivety with a depth of character that reveals his underlying integrity and warmth.



Jim

Jim Trott is a beloved and quirky member of the Dibley Parish Council, renowned for his catchphrase 'No, no, no, no... yes.' Auditioning for Jim requires an actor who can embody his unique blend of confusion and comic eccentricity. Jim is characterised by his habit of beginning every sentence with a series of 'no's, a trait that adds both humour and a distinct personality to his character. Despite his seemingly perplexed nature, Jim is endearing and contributes meaningfully to the community, often in his own unconventional way. The role calls for an actor capable of delivering comedic lines with a natural and effortless charm, while also portraying the underlying warmth and good intentions of Jim's character. Actors auditioning for this role should be prepared to showcase their ability to play a character who is both comically bewildered and genuinely kind-hearted, making Jim a memorable and cherished part of the 'Vicar of Dibley'.



David

David Horton is a pivotal character in 'The Vicar of Dibley,' known for his imposing presence and conservative views. As the chairman of the Parish Council, he often finds himself at odds with the vicar, Geraldine. Auditioning for David requires an actor who can convincingly portray a figure of authority and traditionalism, often serving as the foil to Geraldine's more progressive ideas. David is characterised by his stern demeanour, quick temper, and a no-nonsense attitude, yet he is not without depth and complexity. His character occasionally reveals a softer, more vulnerable side, hinting at the multi-dimensional nature beneath his rigid exterior. The role demands an actor who can deliver lines with assertiveness and gravitas, while also being able to navigate the subtler aspects of David's personality, including moments of introspection and reluctant change. Actors auditioning for this role should be prepared to embody David's commanding presence, his sharp wit, and the gradual transformation he undergoes, reflecting his underlying integrity and capacity for growth.



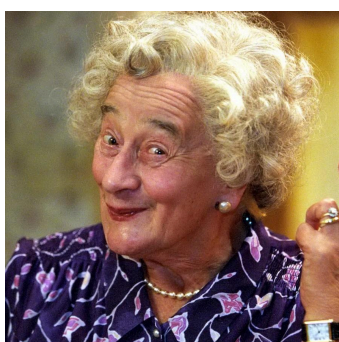
Owen

Owen Newitt is a prominent and memorable character in 'The Vicar of Dibley,' known for his blunt, unfiltered manner and often risqué sense of humour. As the local farmer, Owen is characterised by his rugged, earthy nature and lack of social tact. Auditioning for Owen requires an actor who can convincingly portray a character who is at once gruff, direct, and endearingly honest. Despite his rough exterior and occasional lack of decorum, Owen is a well-liked member of the community, known for his straightforward approach and underlying good heart. The role demands an actor who can deliver lines with a natural, unvarnished authenticity, while also bringing a sense of depth and likability to Owen's character. Actors auditioning for this role should be prepared to embrace Owen's raw, unpolished demeanour, his often colourful language, and his ability to provide comic relief through his straightforward outlook on life.



Frank

"Frank Pickle is known for his quiet, unassuming nature, and his penchant for being excessively tedious and detailed in his communication. As the secretary of the Parish Council, Frank is often the butt of jokes due to his long-windedness and lack of self-awareness regarding how boring others find him. Auditioning for Frank requires an actor who can convey this sense of monotony and meticulousness without losing the audience's interest. Frank's character is a gentle soul, well-meaning, and earnest in his role within the community, which adds a layer of endearment to his otherwise dull demeanour. The role calls for an actor who can master the art of delivering long, mundane speeches while maintaining a certain charm and likability. Actors auditioning for this role should be prepared to embody Frank's soporific nature, his attention to detail, and the subtle humour that arises from his interactions with other, more vibrant characters in the village.



Mrs. Cropley

Mrs. Letitia Cropley, often referred to as the 'Queen of Cakes' in Dibley, is a delightfully eccentric character known for her bizarre and often inedible culinary creations. Auditioning for Mrs. Cropley requires an actress who can portray her quirky, avant-garde approach to cooking with a sense of whimsy and conviction. She is an enthusiastic member of the Parish Council and takes immense pride in her unique recipes, which often feature unexpected and sometimes startling ingredient combinations. Mrs. Cropley's character is endearing in her unshakable confidence and creativity, bringing a light-hearted and humorous element to the community gatherings. The role demands an actress who can deliver lines with a mix of earnestness and obliviousness to the reactions her culinary experiments evoke. Actors auditioning for this role should be prepared to embrace Mrs. Cropley's unconventional nature, her cheerful disposition, and her ability to remain unfazed by the less-than-enthusiastic responses to her adventurous cooking



Mary (Alice's sister)

Mary, appearing in a single scene in 'The Vicar of Dibley,' is Alice's sister, characterised by a similar innocence and straightforwardness. She shares a family resemblance with Alice, not just in appearance but also in her gentle, unassuming demeanour. In her brief appearance, Mary's role is to provide a snapshot into Alice's family dynamics, offering both support and a touch of humour. The actress auditioning for Mary should be able to quickly convey a sense of kind-hearted simplicity, complementing the well-established character of Alice.



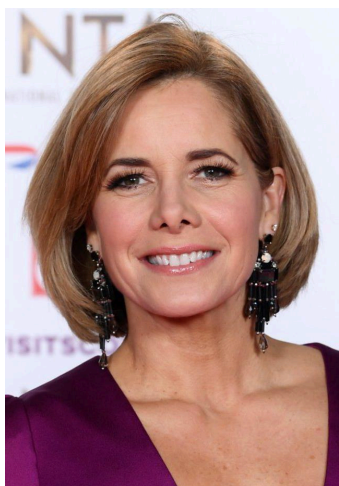
Mrs. Tinker (Alice's mother)

Mrs. Tinker, Alice's mother in 'The Vicar of Dibley,' is a character with a modest yet memorable presence. She embodies the quintessential traits of a caring, albeit slightly quirky, mother figure in the village. Her interactions provide insight into Alice's background, offering a glimpse of the nurturing yet eccentric environment that shaped Alice. The actress auditioning for Mrs. Tinker should be able to portray a warm, motherly character with a hint of the whimsical charm that runs in the family.



Chris Evans

Chris Evans, featuring in a special guest appearance in 'The Vicar of Dibley,' brings his own unique charisma and personality to the show. Known for his energetic and affable persona, Chris in the series mirrors his real-life charm and wit. In his role, he effortlessly blends his celebrity status with a touch of self-deprecating humor, endearing himself to both the characters and the audience. The actor auditioning for Chris should be able to portray a likable and charismatic figure, with the ability to engage in playful banter while also showing a genuine connection with the village's residents. The portrayal calls for a balance of star quality and approachable, down-to-earth charm, making Chris's character a memorable addition to the episode he appears in.



Darcey Bussell

Darcey Bussell graces 'The Vicar of Dibley' with her presence as a special guest, bringing the poise and elegance she's renowned for as a celebrated ballerina. In the show, Darcey portrays a version of herself, infusing her character with the grace and charm that she naturally embodies. Her appearance in the village is a significant event, adding a touch of glamour and excitement. The actress auditioning for Darcey's role should capture her dignified yet warm presence, displaying the blend of artistic elegance and approachable friendliness that Darcey is known for. This role requires an ability to portray a sense of awe and admiration from the villagers while maintaining a grounded and humble persona, Darcey does a ballerina dance with Geraldine so some form of dance experience will be beneficial.



Henrietta (Child)

Lucy (Child)

Samantha (Child)

Vet (Planted in the Audience)